

NEXNOVO TECHNOLOGY CO., LTD

We are the inventor and manufacturer of transparent LED display

PROFILE

www.nexnovo.com



NEXNOVO

WHO WE ARE

We are the leading manufacturer of Transparent LED Display, with a dynamic group of technical professionals, software developers and worldwide partners. NEXNOVO holds over 30 patents on its display, and strives to evolve and bend ideas of innovation to reality. We are the best at transparent LED display solutions.

We will handle all aspects of your projects from A to Z.

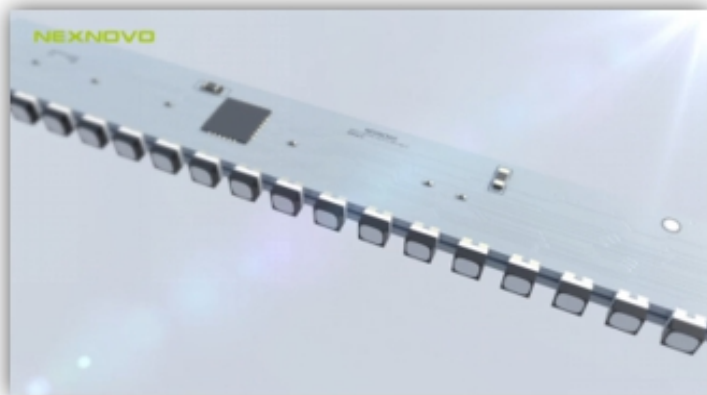
- Project Consulting
- Solution Design
- Commercial Budget
- Project Mockup Animator
- 2D Auto CAD
- 3D Visualization
- Global Partner Installation & Commissioning Service
- Maintenance And Aftersale Service



KEY TECHNOLOGY

True viewing angles

In NEXNOVO's Front facing (Top-lighting) solution, the LED lamps used are industry standard models. The viewing angle is at least 160 degrees. Very similar to traditional LED screens. Below video will explain more...



True color balance

NEXNOVO's automated custom housing layer (Lens)
The light is dispersed through the NEXNOVO atomized layer (Lens) to generate uniform colors at any angle. Insuring the best reproduction of your content.



Best connection

NEXNOVO invented the 3D SMT technology and it has been patented globally.
The led lamps are mounted on the edge of the strip (PCB) and then securely soldered onto a surface formed by four (4) distinct pads. It requires over 40N (about 4kg) of force to unhook a NEXNOVO lamp from the strip.





Outstanding Transparency

Lamp strip thickness is only 1.6mm,
With 65%~95% high transparency.
NEXNOVO displays are almost
invisible from 3 meters away.



High Brightness

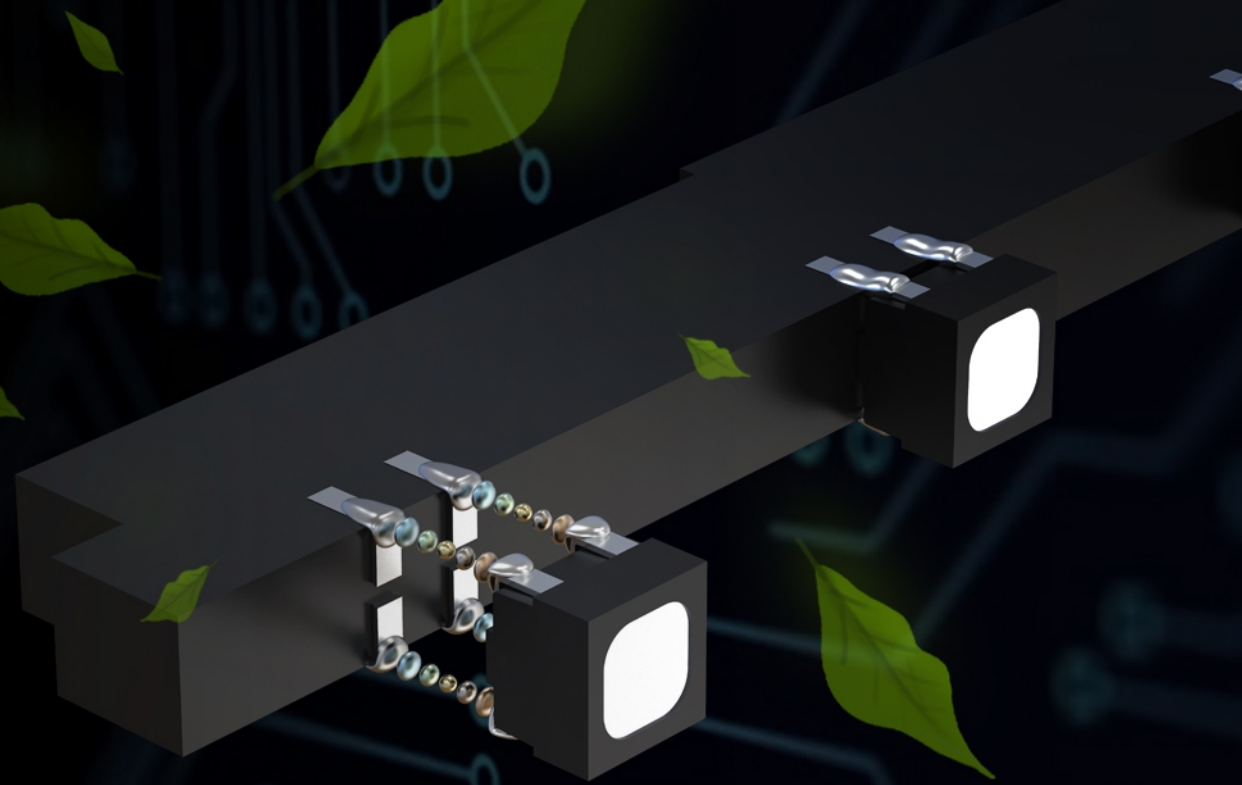
NEXNOVO transparent display's maximum brightness is designed with $9000\text{cd}/\text{m}^2$, but maximum working brightness is been set in $7500\text{cd}/\text{m}^2$, to ensure a good performance with high brightness even working at day time and long lifetime of the display.





Longer lifetime

With NEXNOVO's 3D-SMT top-lighting, side soldering technology, controller IC are evenly distributed on the PCB, more space for the wiring, more reasonable layout, faster cooling and longer lifetime, 5 years lifetime at minimum.

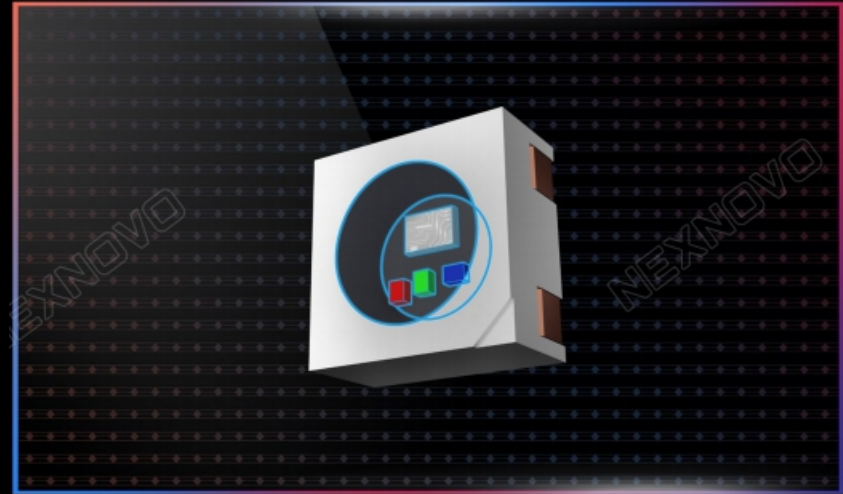


Core technology

Glass LED with chip

Integrated-IC

LED chip and ICs combined inside our lamps
Precise design guaranteeing stable performance





PROJECT CONSULTING



SOLUTION DESIGN



AUTO CAD & 3D RENDERING



MANUFACTURING



DIGITAL SLIDING DOOR



GLASS LED VIDEO WALL



GLASS LED SIGNAGE



AFTERSALE SERVICE

OUR METHODOLOGY

We design and deliver turn-key solutions to ensure your digital strategy not only looks amazing but functions amazing.

Worldwide Partnership is the KEY!



INCLUDES:

- Transparent LED Video Wall
- Transparent Smart Poster
- Transparent LED Sliding Door
- Glass LED Facade
- Glass LED Barrier
- Glass LED Way Findings
- Glass LED Digital Signage
- **Media Players*** & Controllers

INCLUDES:

- **Media Player Software***
- **Content Management***
- **Webservices***
- **Integrations***

INCLUDES:

- Technical Consultation
- Solution Design
- Auto CAD & 3D Visualization
- **Project Management***
- **System Infrastructure***
- **Installation & Configuration***
- Training Annual Support
- **Procurement & Warehouse***

NEXNOVO®
PREMIUM PARTNER

* service provided by
NEXNOVO Premium Partner

HIGH LEVEL PROJECT OVERVIEW

We have seasoned professionals who ensure the project is properly planned, designed, and budgeted. We ensure the right technology choices are made so that it will go in smoothly, activate properly, on time, and run seamlessly.



Customer Requirement

- Initial Meeting
- Specification Review
- Application Proposal



Quotation



Project Plan



Engagement Accepted



Project Management



Service & Support

- Annual Maintenance Contracts
- Asset Inventory Management
- Troubleshooting



Hand over & Training

- Operation Manual



Installation & Configuration



Logistic & Delivery



Hardware Production

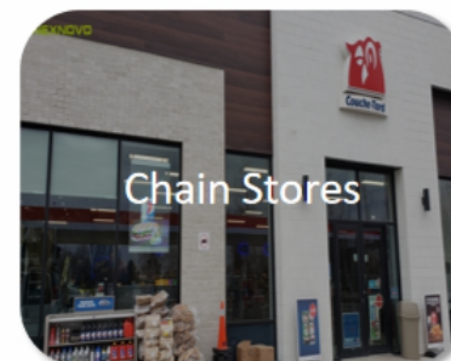
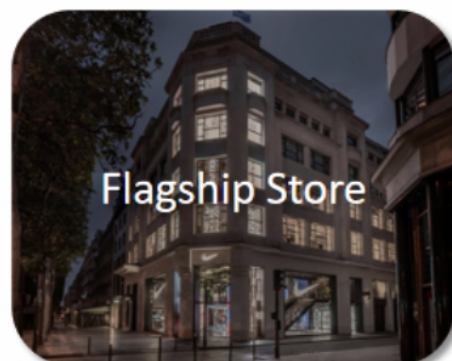
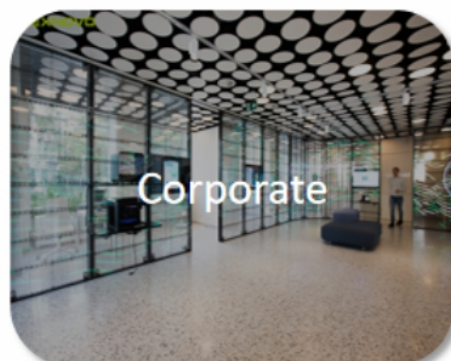
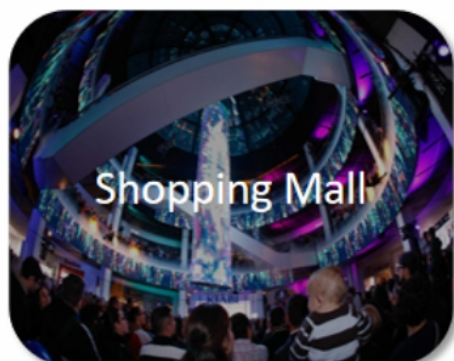
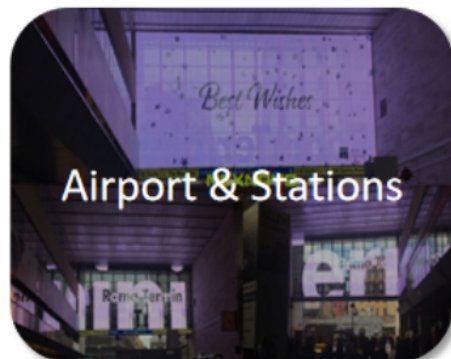
OUR CLIENTS

From Retail stores to Architectures, we are leaders in transparent LED Displays solutions.



MARKET SECTORS

Learn more about what we can do for you in different market sectors.



1

Transparent LED display - Retail Window Display



Features

Without horizontal frames to boost up transparency
Designed for premium window advertisement or similar environment

Application

Storefront window of premium/luxury stores, flagship/concept stores



Horizontal
Frameless



High
Transparency



Multi-width

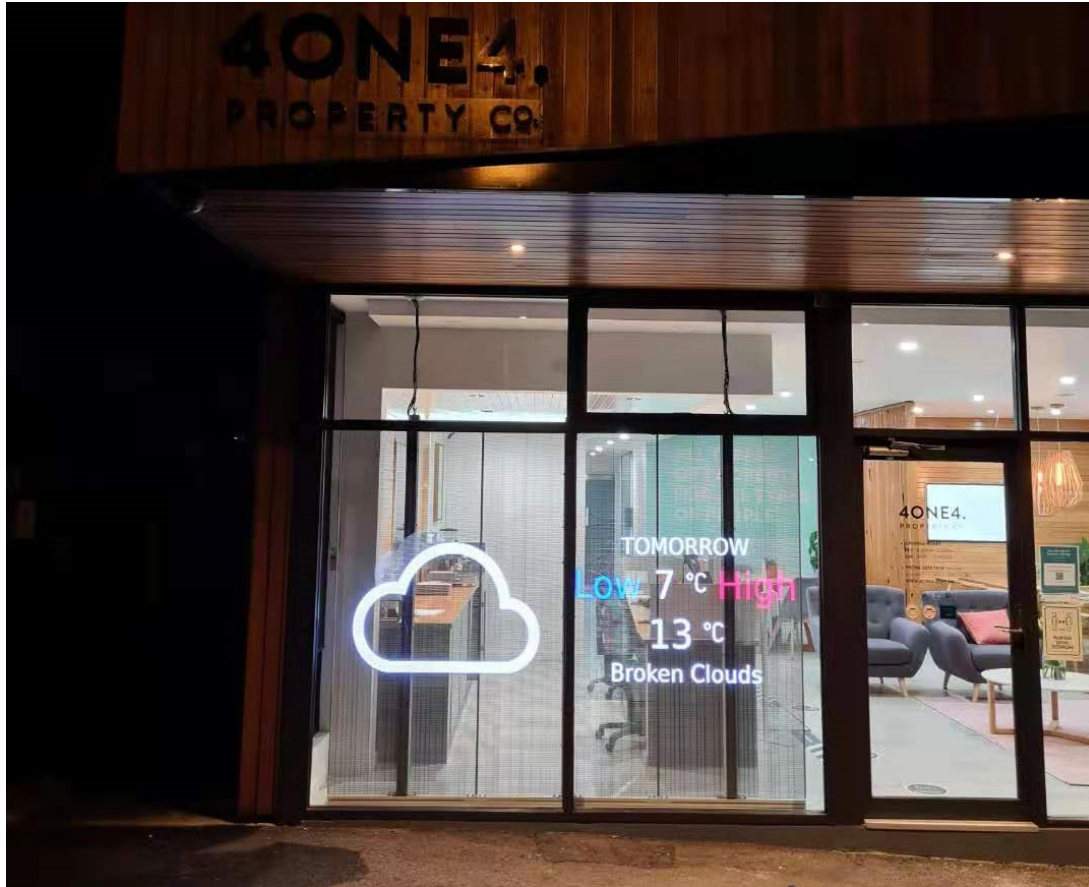


High
Brightness

PRODUCT SPECIFICATION

Model	LED	Resolution (dot/m ²)	Pixel Pitch (WxH)(mm)	Cabinet size (WxH)(mm)	Cabinet Resolution (dots)	Brightness (CD/m ²)	Transparency
NJ2.6	SMD1515	67454	2.61 x 5.68	813/1000/1313 x 500	312/384/504 x 88	4500-5000	>72%
NJ3.3	SMD1515	42624	3.38 x 6.94	813/1000/1313 x 500	240/296/388 x 72	4500-5000	>78%
NJ3.9	SMD1515	32768	3.9 x 7.8	813/1000/1313 x 500	208/256/336 x 64	4500-5000	>80%
	SMD1921	32768	3.9 x 7.8	813/1000/1313 x 500	208/256/336 x 64	4500-5000	>74%

RELATED PROJECTS





XRW Series

Features

Light weight, modular design
Easy for customization, fixed installation

Application

Shopping mall, glass façade, Elevator and
Customization projects

PRODUCT SPECIFICATION

XRW Specification

Model	LED	Resolution (dot/m ²)	Pixel Pitch (WxH)(mm)	Cabinet size (WxH)(mm)	Cabinet Resolution (dots)	Brightness (CD/m ²)	Transparency
XRW3.3	SMD1515	42624	3.38 x 6.94	1000 x 500(1000)	296 x 72(144)	5000-5500	>78%
XRW3.9	SMD1515	32768	3.91 x 7.82	1000 x 500(1000)	256 x 64(128)	5000-5500	>80%
	SMD1921	32768	3.91 x 7.82	1000 x 500(1000)	256 x 64(128)	5000-5500	>74%
XRW8	SMD1921	16384	7.82 x 7.82	1000 x 500(1000)	128 x 64(128)	5000-5500	>80%
XRW10	SMD1921	9216	10.42 x 10.42	1000 x 500(1000)	96 x 48(96)	5000-5500	>85%
	SMD2727	9216	10.42 x 10.42	1000 x 500(1000)	96 x 48(96)	7000-7500	>75%
XRW16	SMD1921	4096	15.63 x 15.63	1000 x 500(1000)	64 x 32(64)	3000-3500	>90%
	SMD2727	4096	15.62 x 15.62	1000 x 500(1000)	64 x 32(64)	7000-7500	>85%
XRW20	SMD2727	2304	20.83 x 20.83	1000 x 500(1000)	48 x 24(48)	5000-5500	>82%

RELATED PROJECTS - CUSTOMIZATOIN



RELATED PROJECTS - Media Facade



Lights On



Lights Off



NS series can be used as sliding doors, ensuring high-definition & resolution without compromising the transparency. Tempered glass structure ensuring reliable protection, especially suitable for hospitality, shopping malls, office building, high-end flagship stores.



High brightness & lower power consumption

High brightness (up to **5500 nits**) and better daylight visibility than LCD and projection



Outstanding transparency

With high transparency (**72% -78%**), NEXNOVO's display are almost invisible from only 3 m



Simple and convenient setup

Easy, tool-less installation, making setting up a screen a breeze.



Brand stores / Retail flag ship windows



Shopping malls



Sliding doors



Wall partitions

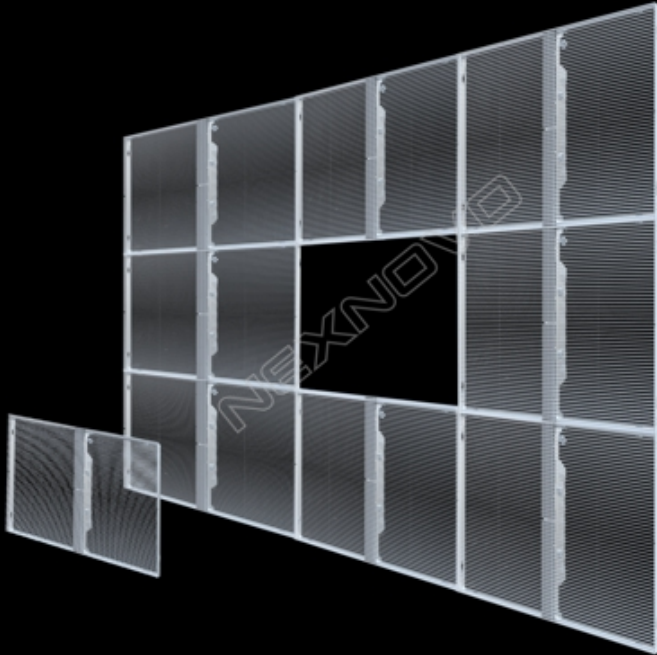
PRODUCT SPECIFICATION

Model	NS2.6			NS3.3		
LED	SMD1515			SMD1515		
Brightness(CD/m ²)	5000-5500			5000-5500		
Pixel Pitch	2.61x5.68			3.38x6.94		
Transparency	72%			78%		
Max.Power(W/m ²)	800			800		
Avg.Power(W/m ²)	240			240		
Display Resolution	384x352	384x396	384x440	296x288	296x324	296x360
Resolution	135168	152064	168960	85248	95904	106560
Display size(W x H)(mm)	1000x2000	1000x2250	1000x2500	1000x2000	1000x2250	1000x2500
Cabinet size(W x H)(mm)	1020x2160	1020x2410	1020x2660	1020x2160	1020x2410	1020x2660

* The sliding door is quoted based on detailed projects and requirements, the final quotation will include video control system, transparent LED display and sliding control system, etc. The price above only shows display price per sqm.

RELATED PROJECTS





NR Series

Features

Unique quick-lock design
Designed for rental/stage with tool-less & fast installation

Application

Fixed installation, Rental, stage of TV show, concert

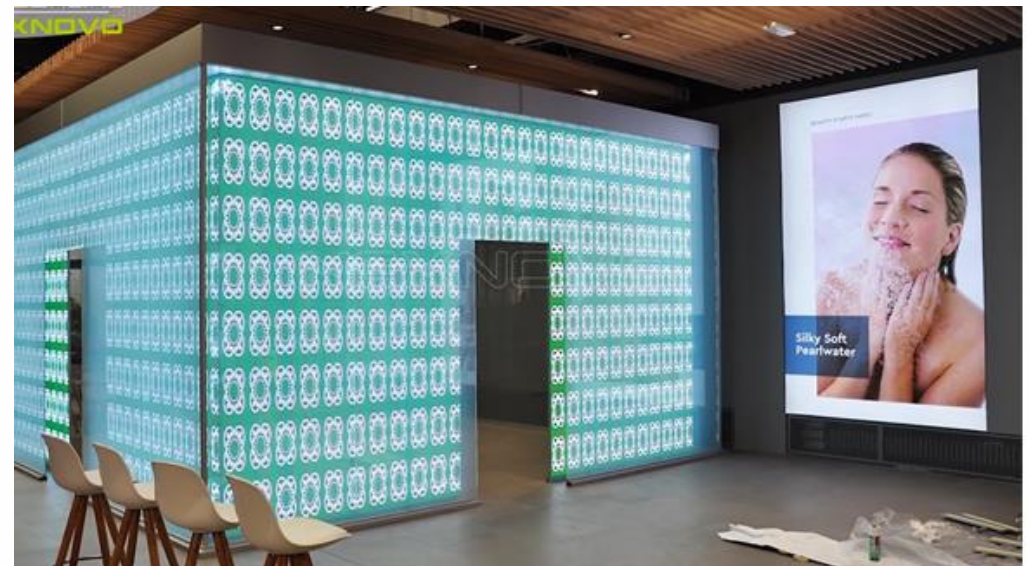
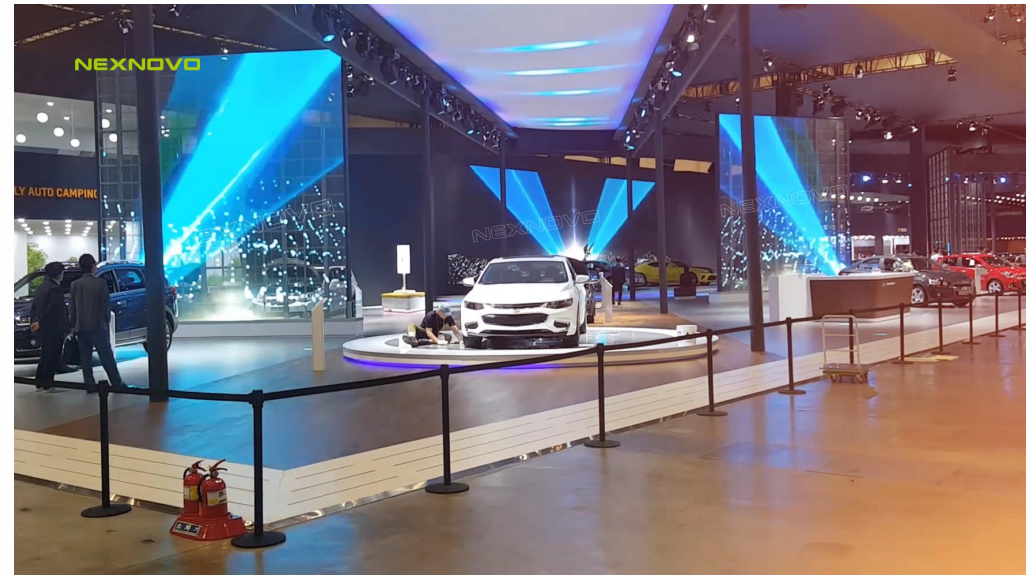
Typical Projects

U2 Band Concert Tour

NR Specification

Model	LED	Resolution (dot/m ²)	Pixel Pitch (WxH)(mm)	Cabinet size (WxH)(mm)	Cabinet Resolution (dots)	Brightness (CD/m ²)	Transparency
NR3.3	SMD1515	42624	3.38 x 6.94	1000 x 500(1000)	296 x 72(144)	5000-5500	>78%
NR3.9	SMD1515	32768	3.9 x 7.8	1000 x 500(1000)	256 x 64(128)	5000-5500	>80%
	SMD1921	32768	3.9 x 7.8	1000 x 500(1000)	256 x 64(128)	5000-5500	>74%
NR8	SMD1921	16384	7.8 x 7.8	1000 x 500(1000)	128 x 64(128)	5000-5500	>80%
NR10	SMD1921	9216	10.42 x 10.42	1000 x 500(1000)	96 x 48(96)	5000-5500	>85%
	SMD2727	9216	10.42 x 10.42	1000 x 500(1000)	96 x 48(96)	7000-7500	>75%
NR16	SMD1921	4096	15.62 x 15.62	1000 x 500(1000)	64 x 32(64)	3000-3500	>90%
	SMD2727	4096	15.62 x 15.62	1000 x 500(1000)	64 x 32(64)	7000-7500	>85%

RELATED PROJECTS



NT Series

LED glass NexEsign

NexEsign is an ultra-transparent glass LED display using NEXNOVO's patented integrated-IC technology and nano film circuits. This display has an all-in-one cloud base content creation & management application, allowing a complete central administration. It is the new generation of smart high-tech displays that brings innovation to any and most markets requiring efficient and avant-guard signage.



Transparent glass LED displays



Transparent & Thin



High-tech design



Cloud base services



Green / Eco-friendly



Water-resistant & shatter-proof



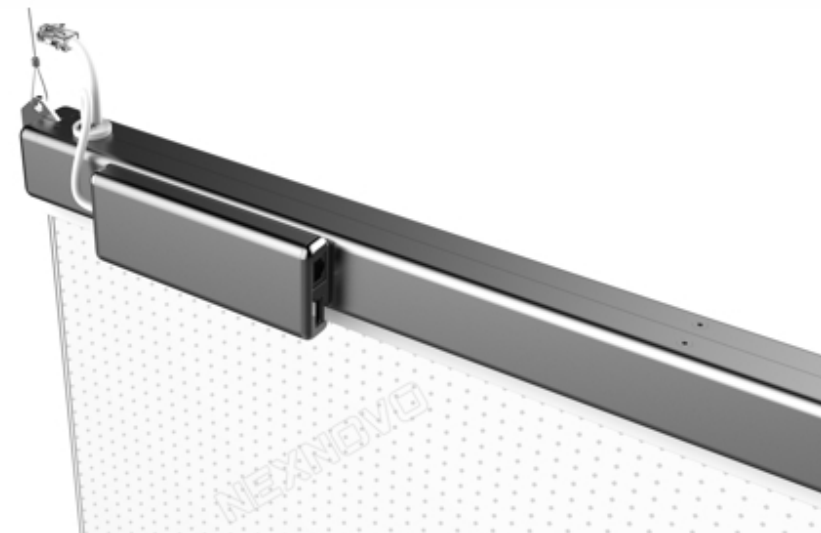
Inter-Linkable

PRODUCT SPECIFICATION

NexEsign

Model	NT
LED model	NEX2020-T
Display size (WxH) (mm)	800 x 500
Cabinet size (WxH) (mm)	800 x 575
Pixel density (dot)	3648
Pixel pitch (mm)	10.52 x 10.42
Brightness (cd/panel)	3000-3500
Max. power (W/panel)	240
Ave. power (W/panel)	100
Transparency	92%
Weight (kg/panel)	10

Controller



RELATED PROJECTS

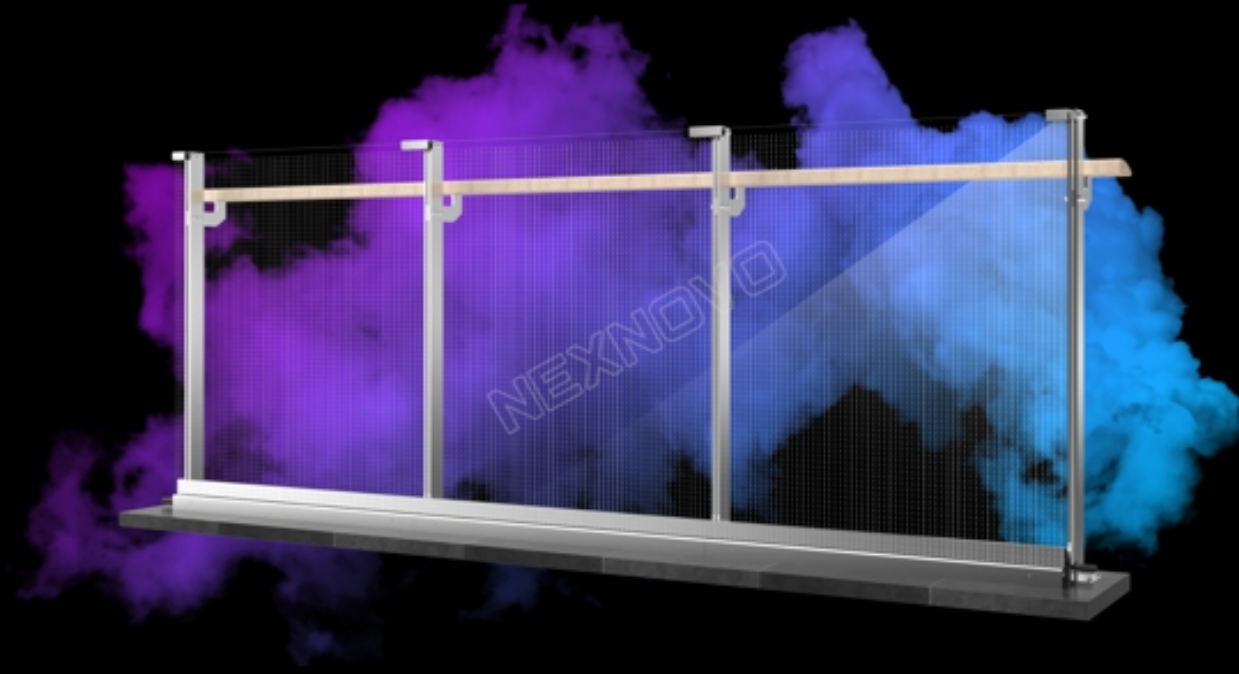


NB Series

LED glass Barrier

NB series use a high density industrial tempered glass as the base material, matched with NEXNOVO's patented integrated-IC technology and its applied Nano film circuits. These techniques combined, gives way to super-high transparency and high energy efficient glass LED displays. This series of glass LED will definitely give value to any new or existing glass barriers, enabling them to become revenue generators, not only an architecture and safety structures. These NEXNOVO LED glass barriers will open many new creative possibilities for architects and designers.

These barriers are widely used in Airports, train stations, Metro stations, shopping malls, lounge, tourist site balustrades, stadiums, plazas, and many more environments.



Transparent and simple design



Eco-friendly



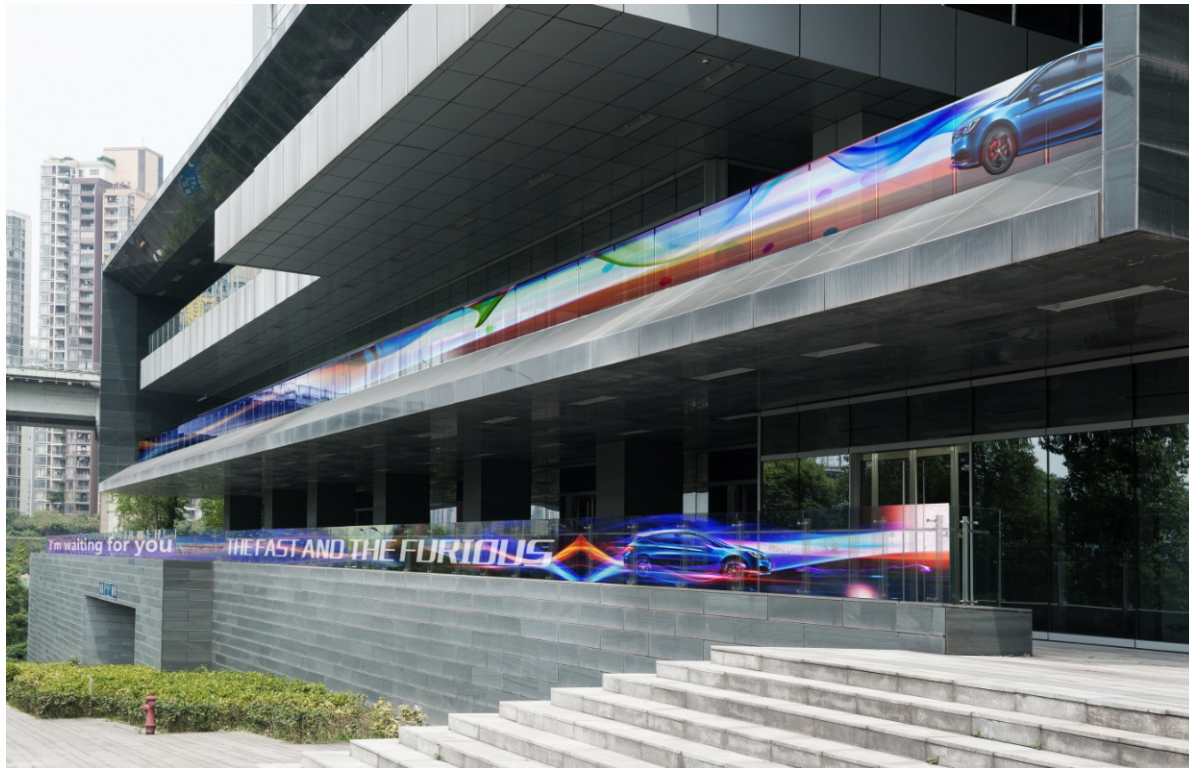
Complete solution

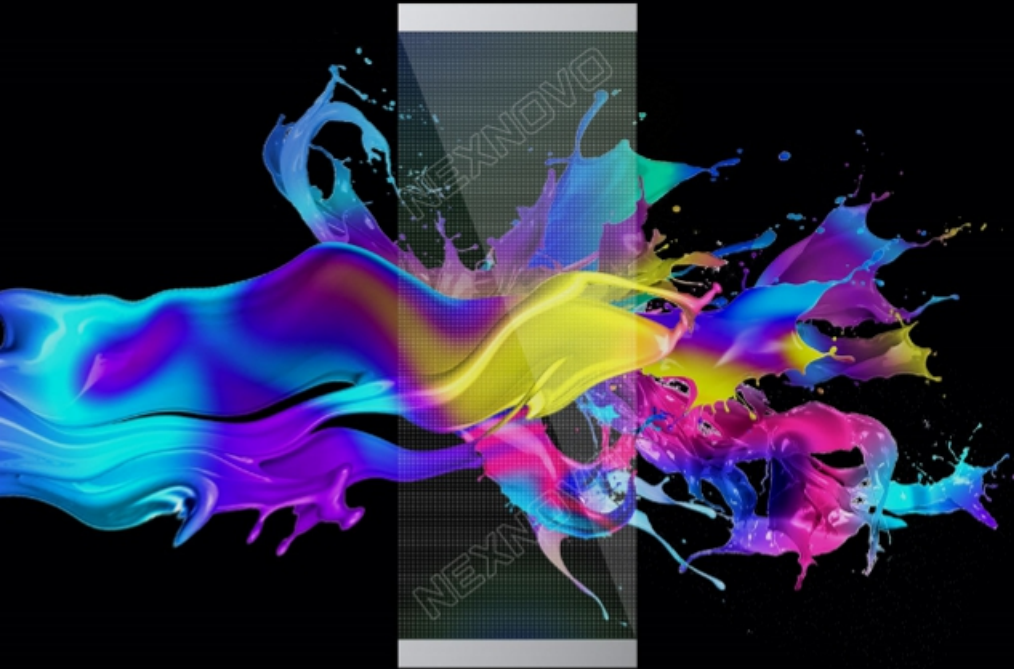


PRODUCT SPECIFICATION

NEXNOVO®

Item No.	LED	Pixel Pitch (W X H) (mm)	Resolution (Dots / sqm)	Cabinet Size (W X H) (mm)	Cabinet Resolution (W X H) (mm)	Brightness (CD/sqm)	Transparency
NB10	NEX2020	10.42 x 9.8	5568/11136	500 x 1200 1000 x 1200	48 x 116 96 x 116	3000 - 3500	90%





NSN Series

FULL COLOR AND MAXIMUM TRANSPARENCY

NSN Glass LED series are specially developed and designed for high-end window advertising and in-store customer experiences. Nexnovo glass LED uses high density industrial tempered glass as base material and combined with their patented integrated-IC technology. This products is widely used for retail glass windows and atrium in modern architectures.

NSN series has very high transparency, giving way to maximum impact on any creative content.



Transparent and simple design



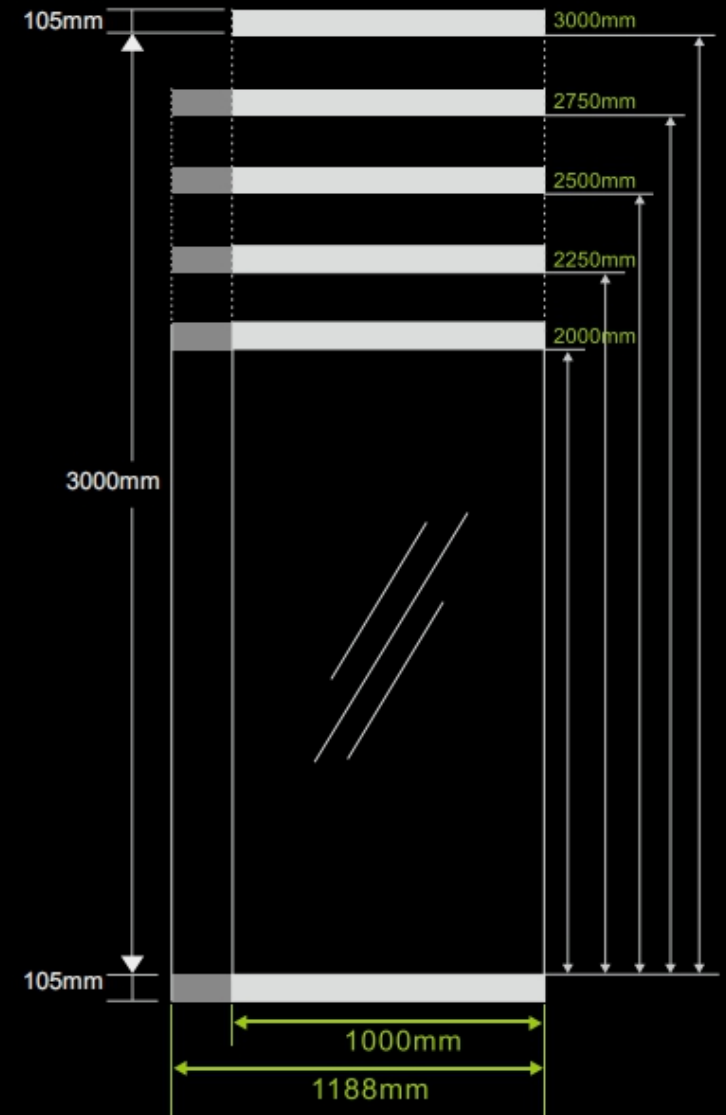
Eco-friendly



Complete solution

PRODUCT SPECIFICATION

Product model	NSN10									
LED	NEX2020									
Pixel pitch (mm)	10.42X10.42									
Pixel/m ²	96x96=9216									
Standard panel width (mm)	1000					1188				
Standard panel height (mm)	2000	2250	2500	2750	3000	2000	2250	2500	2750	
Panel resolution (W*H)	96x192	96x216	96x240	96x264	96x288	114x192	114x216	114x240	114x264	
Maximum power (W/ panel)	4x400	6x400								
Brightness (cd / m ²)	3500~4000									3000 3500
Transparency	92%									
Refresh rate	≥3840Hz									
Weight (kg / panel)	91	102	112	122	132	108	120	132	144	
Thickness	17.28mm									



RELATED PROJECTS

NEXNOVO®



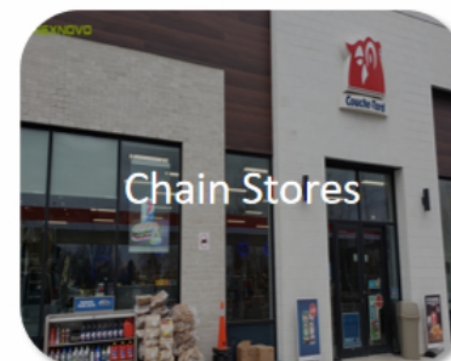
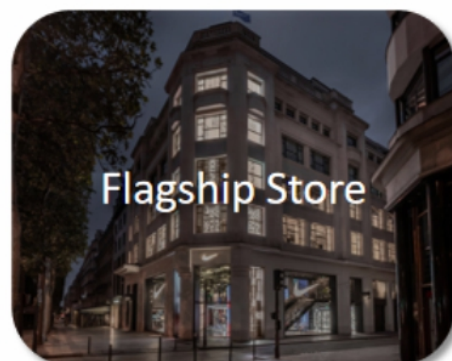
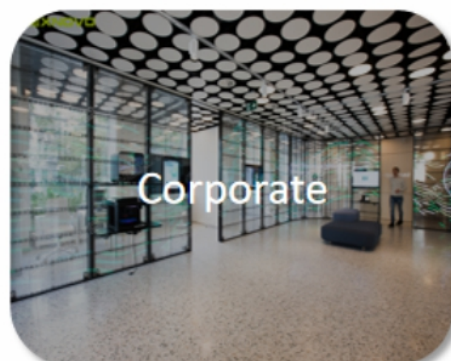
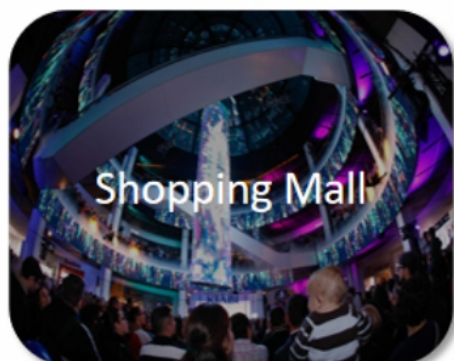
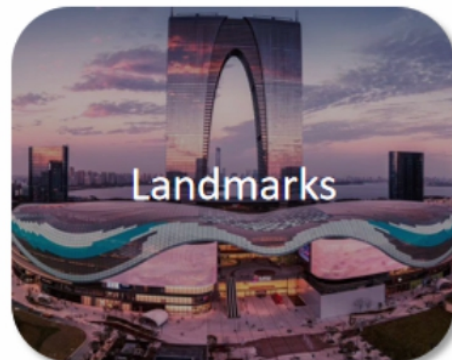
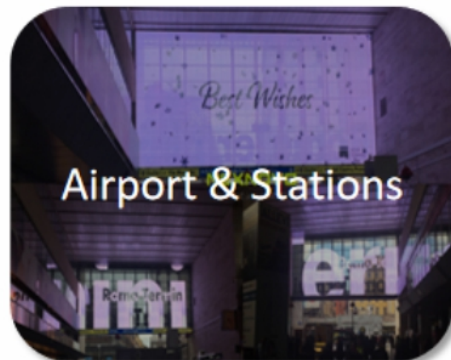
OUR CLIENTS

From Retail stores to Architectures, we are leaders in transparent LED Displays solutions.



MARKET SECTORS

Learn more about what we can do for you in different market sectors.





adidas

- Model: XRW
- Application: Events
- Location: China



BOLD

- Model: NR
- Application: Front window display
- Location: Chile



Footlocker

- Model: XRW
- Application: Front window display
- Location: Singapore
- [Project Video](#)

AUTOMOBILE

NEXNOVO®



GENESIS

GENESIS

Model: XD5 (Customized)

Area: 180 SQM

Location: Australia

➤ [Project video](#)

AUTOMOBILE

NEXNOVO®



Audi

Model: NJ3.38

Display size:

W3m x H2m (Single side - Hanging)

W3m x H2m (Double sides - Standing)

Location: 500 car dealerships in China

劳斯莱斯汽车（北京）



劳斯莱斯汽车（北京）



ROLLS ROYCE

Model: NS3

Area: 10 SQM

Location: Beijing, China

➤ [Project Video](#)

AUTOMOBILE



Mercedes-Benz

Mercedes-Benz

Model: XH3

Area: 5 SQM

Location: Beijing, China

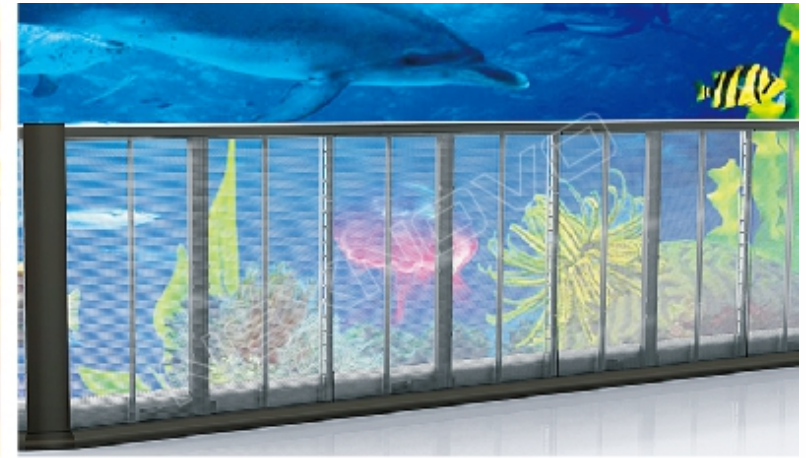
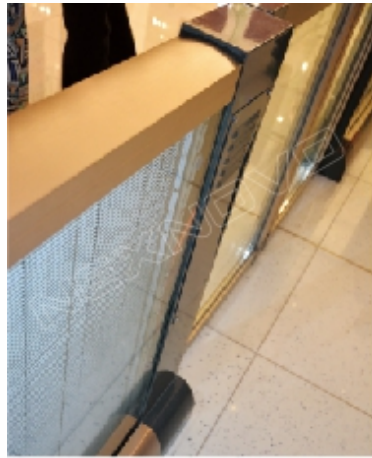
COSMETICS



- Model: NS
- Application: Front window display
- Location: France

SHOPPING MALL

NEXNOVO®



THE DUBAI MALL
Model: NH6
Area: 58.25 SQM
Location: Dubai Tower, UAE



Façade in China Town

Model: XRW16

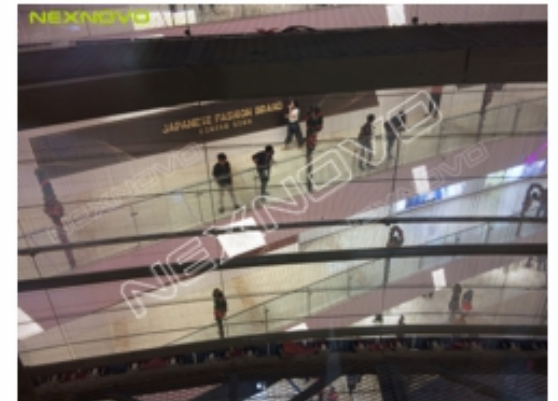
Area: 572 SQM

Location: Xi'an City, North of China



SHOPPING MALL

NEXNOVO®



Indonesian Medan Mall Elevator

Model: XD10+XRW20

Area: 462.5+133.32 SQM

Application: Elevator

Location: Indonesia

SHOPPING MALL

NEXNOVO®



SCS Shopping mall

Model: XRW10

Area: 131 SQM

Application: sightseeing elevator

Location: Moscow

BANK



BNP PARIBAS

- Model: XRW10
- Application: Partition Wall
- Location: Paris

BANK



Model: NS3.38 + NJ3.38

Area: 23.4 SQM

Location: Bahrain

Application: Sliding doors





SABB  ساب

- Model: XRW8
- Application: facade
- Location: Saudi Arabia

TELECOMMUNICATIONS

NEXNOVO®



- Model: NS / NR
- Application: Front window display
- Location: Paris Opera / Champs Elysees / La Deffense

TELECOMMUNICATIONS



- Model: NS2.6
- Application: Front window display
- Location: Paris Flagship
- Display Area: 8 sqm

TELECOMMUNICATIONS

NEXNOVO®



- Model: NS
- Application: Front window display / Interior decoration
- Location: Greece

CHAIN STORES



Couche Tard

- Model: NP2.5L
- Application: Front window display
- Location: Canada

These below 10 key points are reasons why our customers choose NEXNOVO products.

- **3D SMT Technology** – making sure the LED lamp is very well bounded (attached) to the strip (PCB) – Insures no intermittent problems and dead pixels.
- **Front facing LED Technology** – giving the best VISUAL effect. – Insures best visible angles and front brightness,
- **Custom design housing** – A special NEXNOVO UV treated lens is used to cover our LED lamps to blend the colors in a perfect uniform way and in all visible angles. – Insures a quality perfect content output, crisp and sharp contrasts no matter the angle of vision.
- **Premium Power supplies** – Noise-Free high capacity and certified power supplies only are used in NEXNOVO products – Insuring stability and durability.
- **Front and Rear service** – NEXNOVO products can offer front and rear service repair possibilities, making it the most convenient for any servicing interventions.
- **Brightness Uniformity** - NEXNOVO and its purchasing power can assure only the best quality LED lamps from the top manufacturer in the world, with a $\geq 97\%$ uniformity.
- **Certifications** – NEXNOVO products are constantly evolving and obtaining required certifications, ISO9001, ISE14001; CE; ETL; BS476 Class 1.
- **Factory direct contact** – NEXNOVO offers services of design and consulting to its partners, under legal NDA's NEXNOVO will help in securing direct end-user's decisions.
- **Financials** – NEXNOVO has a strong financial situation insuring the existence of our company, products and after sales support for many years to come, protect your investment.
- **Portfolio** – NEXNOVO has a wide range of accomplished projects worldwide, from famous global brands to iconic sites. No other factory can claim as such.



SHENZHEN NEXNOVO TECHNOLOGY CO,LTD.

Address : Floor 5, Factory Building 2, No. 8, Qinglan Road 1, Pingshan Industry

Zone ,Pingshan District, Shenzhen, China

Mobile: 0086 181 2386 5796

Fax : 0755-84533087

E-mail : nova@nexnovo.com

<http://www.nexnovo.com>

THANK YOU